



GFM CoreOps Software

for the IBM Power System®, IBM i®, iSeries® & AS/400®

IBM information

This turnkey application was designed to automate five critical areas of most any IBM i shop including:

1. Disk Management,
2. Subsystem Monitoring,
3. History Log Monitoring,
4. Network Monitoring, and
5. Profile Management.

The CoreOps software handles these tasks automatically which frees time for non-routine tasks.

History Log Monitoring

If you run in an unattended nightly processing environment and need to receive an email notifying you that processing has completed normally, CoreOps is your answer.



Installation

The GFM CoreOps Software can be restored/configured by us remotely and be ready to use. There are no special requirements for a dedicated system or a system restart during the installation process. A simple menu IBM interface provides for input of a few parameters and the IBM is set to run automatically from the Job Scheduler.

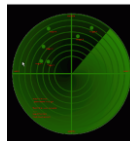
Disk Management

Automatically generated reports analyze DB2 files and libraries and IFS subsystems and automatically reorganizes those you need to keep.



Network Monitoring

Receive an email alert to notify you when defined network devices stop responding to ping requests.



These tools are needed in any IBM i (AS/400) shop. License fees include software and documentation. The initial installation, configuration, & training fee for the software is \$1995 and annual usage & support after the first year is \$895.

The product will be enhanced from time to time and features added to keep up to date with IBM changes.

Message Checker

The message checker sends you an email when error messages occur in one of your defined production subsystems. Emails can be sent to different employees for each subsystem you choose to monitor letting them know that problems exist and need to be corrected.



Profile Management

User Profiles on the system get disabled automatically after a defined period of inactivity and weekly reports are produced for required follow-up.



GFM Consulting, Inc.
P. O. Box 361666
Hoover, AL 35236
(205) 985-5258
www.gfmconsulting.com